



Friday, June 24, 2016

In This Issue

[Harvard Students and Postdocs: Don't Miss These Opportunities!](#)

[SLIDES & VIDEO AVAILABLE! Big Data, Health Law, and Bioethics: PFC's 2016 Annual Conference](#)

[Scholarship from Petrie-Flom Affiliates](#)

[News from Petrie-Flom Affiliates](#)

[From the Blog](#)

[Petrie-Flom Center Events](#)

[Other Harvard Events](#)

[Opportunities](#)

[Join Our Mailing List!](#)

Harvard Students and Postdocs: Don't Miss These Opportunities!



Petrie-Flom Center Student Fellowship 2016-2017 **Applications Due: August 5, 2016**

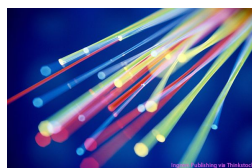
The Student Fellowship Program is designed to support student scholarly research of important issues at the intersection of law and health policy, including issues of health care financing and market regulation, biotechnology and intellectual property, biomedical research, and bioethics. The program is open to all Harvard graduate students who will be enrolled at the University during the fellowship year and who are committed to undertaking a significant research project and fulfilling other program requirements. Although the fellowship is open to all graduate students, including those in one-year programs, we encourage those who are in multi-year programs at Harvard to wait until after their first year to apply.



Call for Harvard Student and Postdoc Submissions **Journal of Law and the Biosciences** **Submissions Due: September 9, 2016**

The Journal of Law and the Biosciences is an online, open-access, peer-reviewed journal. JLB includes a Notes & Developments section, comprised of brief summaries and commentary on recent legislation, regulation, and case law written by graduate students and postdoctoral fellows. We are currently seeking Harvard graduate students and postdoctoral fellows from any school to contribute papers to be published in JLB's Notes & Developments section in early 2017. We will consider papers generated specifically for JLB, as well as papers that have been (or will be) initially written as student notes or course papers and edited for this particular purpose. JLB Notes & Developments are limited to 5000 words, including footnotes and references, and should be on a topic of relevance to law and the biosciences, in particular a topic of relatively recent concern, controversy, or change. They should focus on describing the issue at hand, explaining why it is relevant to scholars, and providing analysis and questions for further consideration. For recent examples of submissions by Harvard contributors, check out the April 2016 issue of the JLB.

SLIDES & VIDEO AVAILABLE! Big Data, Health Law, and Bioethics: PFC's 2016 Annual Conference



big data.

"Big Data" is a phrase that has been used pervasively by the media and the lay public in the last several years. While many definitions are possible, the common denominator seems to include the "three V's" - Volume (vast amounts of data), Variety (significant heterogeneity in the type of data available in the set), and Velocity (speed at which a data scientist or user can access and analyze the data). Defined as such, health care has become one of the key emerging use cases for

Held on May 6, 2016, the Petrie-Flom Center's 2016 annual conference entitled "[Big Data, Health Law, and Bioethics](#)" aimed to (1) identify the various ways in which law and ethics intersect with the use of big data in health care and health research, particularly in the United States; (2) understand the way U.S. law (and potentially other legal systems) currently promotes or stands as an obstacle to these potential uses; (3) determine what might be learned from the legal and ethical treatment of uses of big data in other sectors and countries; and (4) examine potential solutions (industry best practices, common law, legislative, executive, domestic and international) for better use of big data in health care and health research in the

U.S.

Today, we're happy to announce that videos of all sessions and slides from many of the presenters are available on our [website](#). **Check them out now!**

Scholarship from Petrie-Flom Affiliates

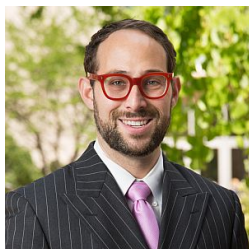


Zika May Place Burden On Medicaid
by Emma Sandoe (Student Fellow Alumna)
Health Affairs Blog, June 8, 2016



The Ethics of Later Abortion
by Frances Kamm
The Philosophers' Magazine, June 13, 2016

News from Petrie-Flom Affiliates



Need For Blood In Orlando Raises Questions About Wisdom Of Banning Donors Due To Sexual Orientation
by Rita Rubin, reviewing article by I. Glenn Cohen (Faculty Director), Jeremy Feigenbaum, and Eli Y. Adashi
Forbes, June 14, 2016

FDA Regulations Limit Blood Donations From Gay Men

Featuring I. Glenn Cohen (Faculty Director)
CBS San Francisco, June 14, 2016

After The Orlando Massacre, Many In The LGBTQ Community Are Turned Away From Giving Blood

by Nikki Blank, interviewing I. Glenn Cohen (Faculty Director)
WBGH News Boston, June 14, 2016

National LGBT Bar Association Announces Their 2016 "Best LGBT Lawyers Under 40"

by D'Arcy Kemnitz, recognizing Katherine Kraschel (Student Fellow Alumna)
National LGBT Bar Association, June 22, 2016



From the Blog



Bill of Health
Examining the intersection of law and health care, biotech & bioethics
A blog by the Petrie-Flom Center and friends

**HARVARD
LAW**

Recent Blog Posts

Pharmaceuticals:

- "[Thoughtful CREATES Act May Help Speed Generic Drug Approvals](#)," by Rachel E. Sachs
- "[The Catch-22 of Bayh-Dole March-In Rights](#)," by Rachel E. Sachs

Medicare/Medicaid:

- "[Zika May Place Burden On Medicaid](#)," by Emma Sandoe
- "[Dental Midlevel Providers: Why they're needed in Massachusetts](#)," by Kelly Vitzthum

General health law/policy:

- "[General Medical Practice: Complaint Handling Issues](#)," by John Tingle
- "[California the latest to pass a Death with Dignity law, 5th in US](#)," by Public Health Law Research
- "[Hearing Aids And The Sound Of Mobile Health Disruption](#)," by Nicolas Terry
- "[Implied Certification and Materiality Under the Civil False Claims Act](#)," by Joan H. Krause

The Week in Health Law podcasts:

- "[Rachel Sachs on 'The Week in Health Law' Podcast](#)," by Nicolas Terry and Frank Pasquale
- "[Deborah Lupton on 'The Week in Health Law' Podcast](#)," by Nicolas Terry and Frank Pasquale

If you'd like to join us as a guest blogger or if you have something you'd like us to post, please contact us at petrie-flom@law.harvard.edu.

Petrie-Flom Center Events

Check out our [website](#) for a more complete listing of events scheduled for 2016, as well as full co-sponsorship information about our collaborators. Remember, you can find materials from many of our events, including slide presentations and full event videos, online in our [events archive](#).

SAVE THE DATE FOR THESE ACADEMIC YEAR 2016/2017 EVENTS:



2016 Petrie-Flom Center Annual Open House
September 7, 2016 5:30 PM
[HLS Pub, Wasserstein Hall, 1st Floor, Harvard Law School](#)
[1585 Massachusetts Ave., Cambridge, MA](#)



Concurrent Surgeries: Medical, Legal, and Ethical Issues
October 27, 2016 12:00 PM
[TBD, Harvard Law School](#)
[1585 Massachusetts Ave., Cambridge, MA](#)



Book Launch: Nudging Health: Health Law and Behavioral Economics

November 16, 2016 12:00 PM

[Wasserstein Hall, Milstein East BC \(2036\), Harvard Law School
1585 Massachusetts Ave., Cambridge, MA](#)



The Animal Welfare Act at 50

December 2-3, 2016

[Rooms TBD, Harvard Law School
1585 Massachusetts Ave., Cambridge, MA](#)



Paying Research Participants: Ethical and Regulatory Parameters

December 9, 2016

[Wasserstein Hall, Milstein East ABC \(2036\), Harvard Law School
1585 Massachusetts Ave., Cambridge, MA](#)



PORTAL Ethics and Health Policy Seminar: Returning Results to Research Participants

February 10, 2017 12:30 - 2:00 PM

[TBD, Harvard Law School
1585 Massachusetts Ave., Cambridge, MA](#)

Other Harvard Events

Dataverse Community Meeting 2016

July 11-12, 2016

[Harvard Medical School, Armenise Amphitheater, 210 Longwood Ave, Boston, MA](#)

Managing Privacy in Research Data Repositories

July 13, 2016

[Harvard Medical School, Cannon Room, Building C, 240 Longwood Avenue, Boston, MA](#)

Opportunities

All opportunities are posted once in our newsletter. For the full posting and for other available positions, please visit our [website](#).

Lecturer in Bioethics

Centre for Human Bioethics at Monash University

Application Deadline: August 22, 2016

Public Health Policy Director

Philadelphia Department of Public Health

Application Deadline: Open until filled

Senior Research Program Coordinator

Berman Institute of Bioethics at Johns Hopkins University

Application Deadline: Open until filled

Lecturer in Philosophy

Department of Philosophy at the University of Maine

Application Deadline: Open until filled

Stay Connected!



Join Our Mailing List!