



To close our 2023 event calendar, the Petrie-Flom Center will host two events for our [Project on Law and Applied Neuroscience](#), a collaboration with the Center for Law, Brain & Behavior at Massachusetts General Hospital.

On December 7, please join us for "[Young, Vulnerable, and Betrayed: What can be done to help America's most vulnerable children?](#)" This event hosted by International Fellow in Law, Policy, and Neuroscience [Saul Glick](#) will discuss interventions to enhance the training, data gathering, and information sharing techniques used by frontline mandatory reporters.

On December 12, Senior Fellow in Law and Applied Neuroscience [Stephanie Tabashneck](#) will moderate [Aligning Criminal Practice with Addiction Science](#), a discussion of how legal responses to substance use disorders disregard neuroscience and behavioral research.

Register now for both events through [our website](#).

Spotlight on Scholarship



Cristina Britez and the Many Faces of Obstetric Violence

This past weekend marked the 25th of November, a day to remember that all manifestations

of gender-based violence should be prevented and eliminated in health procedures.

[Read the full article here.](#)

Upcoming Events

Young, Vulnerable, and Betrayed: What can be done to help America's most vulnerable children?

DATE

December 7, 2023, 12:00 PM EST, Online

Register for "Young, Vulnerable, and Betrayed"

Aligning Criminal Practice with Addiction Science

DATE

December 12, 2023, 12:30 PM EST, Online

Register for "Aligning Criminal Practice with Addiction Science"

Affiliate News and Scholarship



Recently on *Bill of Health*:

"Public Health Emergencies and Human Rights Principles: A Solidarity Approach," by Anne Kjersti Befring and Cecilia Marcela Bailliet.

"Ketamine is the New Viagra," by Vincent Joralemon.

"Securing a Place for Children's Rights in Public Health Emergencies," by Sheila Varadan, Ton Liefwaard, and Jaap Doek

"Judging in the Pandemic – A Malawian Perspective," by Zione Ntaba.

"Two Years On: The Reversal of Tanzania's Education Policies for Adolescent Mothers," by Joelle Boxer.

"What's on the Horizon for Health and Biotech with the AI Executive Order," by Adithi Iyer.

I. Glenn Cohen (Faculty Director)
@CohenProf



“Navigating the New Risks and Regulatory Challenges of GenAI,” by I. Glenn Cohen, Theodoros Evgeniou, and Martin Husovec in *Harvard Business Review*.

NEW COMMENTARY

“How the shakeup at OpenAI underscores the need for AI standards in health care,” by Casey Ross, featuring I. Glenn Cohen in *STAT*.



Susannah Baruch (Executive Director)
@SusannahBaruch

NEW COMMENTARY

“How to Overcome the Biggest Obstacle to Abortion Care in Blue States,” by Susannah Baruch and Carmel Shachar in *Slate*.



Carmel Shachar (Former Executive Director)
@CarmelShachar

NEW COMMENTARY

“How to Overcome the Biggest Obstacle to Abortion Care in Blue States,” by Susannah Baruch and Carmel Shachar in *Slate*.

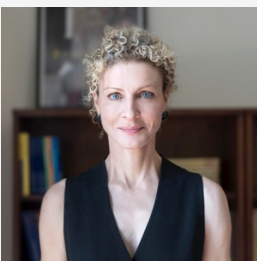


Stephanie Tabashneck (Senior Fellow in Law and Applied Neuroscience)

NEW TESTIMONY

“Dale Holloway trial video: Forensic psychologist testifies as Holloway attempts to prove insanity defense,” featuring Stephanie Tabashneck on *WMUR 9*.

“Man convicted of attempted murder for shooting inside N.H. church during wedding that left pastor and bride wounded,” by Travis Andersen, featuring Stephanie Tabashneck in *The Boston Globe*.



Alicia Ely Yamin (Senior Fellow in Global Health and Rights)
@AE_Yamin

NEW SCHOLARSHIP

“Mapping COVID-19 Legal Responses: A Functionalist Analysis,” by Joelle Grogan and Alicia Ely Yamin in *COVID-19 and the Law: Disruption, Impact and Legacy*.

Francis Kamm (Former Senior Fellow)

NEW SCHOLARSHIP

“Supererogation and Duty” by Francis Kamm in *Handbook of Supererogation*.



“Allocation of scarce resources, disability, and parity,” by Francis Kamm in *Philosophical Studies*.



Emily Largent (Former Student Fellow)
@Emily_a_largent

NEW COMMENTARY

“Is An Alzheimer’s Blood Test Right for Me? | Expert Opinion,” by Claire Erickson and Emily Largent in *The Philadelphia Inquirer*.

“Enhancing Post-Market Evidence Generation For Medical Products,” featuring Emily Largent.

Selected Opportunity Listings

We choose a few upcoming opportunities to feature each week. To see [the full list, check our site](#). To post your own, [get in touch!](#)



[Call for Applications: PORTAL Fellowships](#)



[Call for Applications: Postdoctoral Associate](#)

Petrie-Flom Center | Harvard Law School, 23 Everett Street, Cambridge, MA 02138

[Unsubscribe petrie-flom@law.harvard.edu](mailto:unsubscribe_petrie-flom@law.harvard.edu)

[Update Profile](#) | [Constant Contact Data Notice](#)

Sent by petrie-flom@law.harvard.edu powered by



Try email marketing for free today!